



JAMES HARE

SINCE 1865



Fabric Wallcoverings



## FABRIC WALLCOVERINGS

Fabric wallcoverings produce dramatic walls with natural texture and intense depth of colour, creating a smart and stylish alternative to traditional wallpaper.

Virtually all James Hare's wonderful fabrics can be paper backed to create wallcoverings. With a vast collection of plains, together with fabulous woven patterns, there are a dazzling range of possibilities.

Since 1865, the Hare family has been designing, manufacturing and distributing elegant fabrics using only the finest materials and techniques.

Now run by the fifth generation of the family, the company still abides by its founder's principles of offering only the best in British design, quality and service.

We hope you are inspired.

Orissa Silk . . . . .	4	Chiltern Faux Silk . . . . .	34
Vienne Silk . . . . .	14	Lismore Linen . . . . .	36
Vyne Silk . . . . .	18	Leopard . . . . .	38
Simla Silk . . . . .	20	Shagreen Silk . . . . .	40
Kashmiri Silk . . . . .	22	Paperbacked Braids & Trims . . . . .	42
Connaught Silk . . . . .	24	Bespoke Wallcovering Service . . . . .	46
Astor Faux Silk . . . . .	28	Advice & Information . . . . .	47



# ORISSA SILK

A sustainable, pure silk handwoven dupion. This remarkable fabric is produced from yarns naturally intertwined by silkworms cocooning closely together, resulting in an irregular “slubby” thread that gives this silk its unique beauty.

Quality: 31446WC Composition: 100% Silk Colours: 214 Width: 140cms/55” Piece Length: 24mtrs /26.25 yards



White  
31446WC/76



Ivory  
31446WC/01



Smooth Ivory  
31446WC/01SM



Apple White  
31446WC/198



Pearl  
31446WC/03



Pale Pink  
31446WC/195



Shell Pink  
31446WC/196



Peach Blossom  
31446WC/101



Mica  
31446WC/17



Light Apricot  
31446WC/115



Tranquility  
31446WC/226



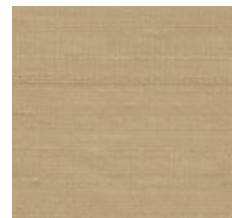
Quinoa  
31446WC/225



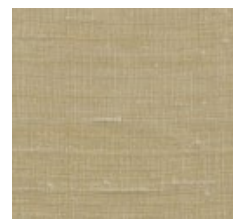
Champagne  
31446WC/02



Magnolia  
31446WC/04



Bamboo  
31446WC/68



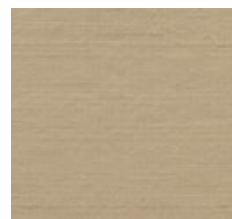
Cream  
31446WC/60



Original Bamboo  
31446WC/185



Prosecco  
31446WC/06



Mosel  
31446WC/18



Sesame  
31446WC/59



Right Wallcovering: Orissa Silk, French Navy 31446WC/125

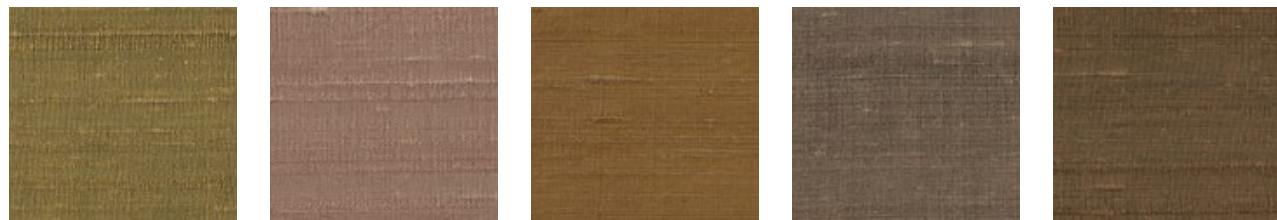
# ORISSA SILK



Platinum 31446WC/05    Silver Sand 31446WC/08    Seashell 31446WC/07    Desert Sand 31446WC/126    Mink 31446WC/161



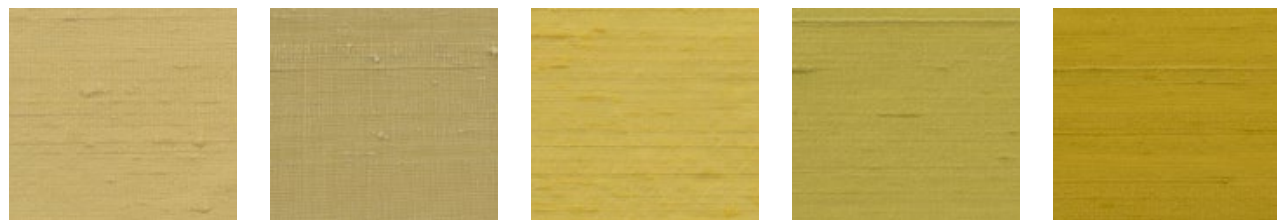
Mango 31446WC/138    Seamist 31446WC/61    Doeskin 31446WC/94    Honeysuckle 31446WC/70    Amaretto 31446WC/09



Inca Gold 31446WC/156    Dusk 31446WC/127    Siena 31446WC/73    Trout 31446WC/27    Bronze 31446WC/205



Fudge 31446WC/26    Walnut 31446WC/10    Otter 31446WC/13    Mole 31446WC/25    Nutmeg 31446WC/119



Daffodil 31446WC/87    Primrose 31446WC/62    Sunflower 31446WC/207    Apollo 31446WC/247    Goldfinch 31446WC/246

# ORISSA SILK



Rattan 31446WC/173    Saffron 31446WC/67    Linseed 31446WC/64    Butterscotch 31446WC/69    Honey 31446WC/157



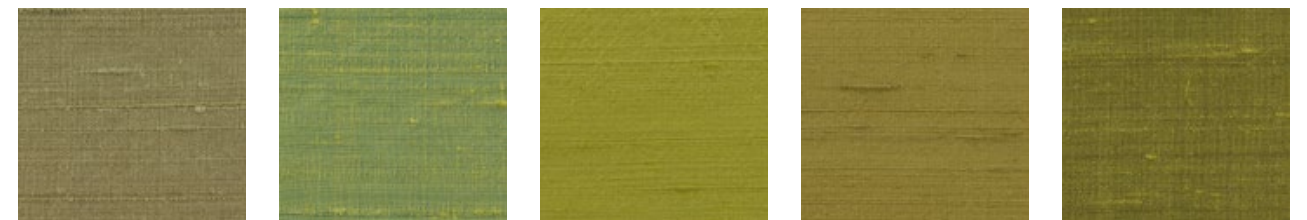
Satsuma 31446WC/265    Gold Leaf 31446WC/66    Gold 31446WC/203    Mustard 31446WC/83    Tangerine 31446WC/72



Pewter 31446WC/14    Gilt 31446WC/65    Brass 31446WC/250    Acacia 31446WC/63    Meadow 31446WC/57

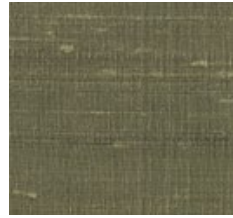


Lime 31446WC/133    Lily 31446WC/164    Green Haze 31446WC/110    Pistachio 31446WC/56    Coriander 31446WC/139



Green Tea 31446WC/58    Shamrock 31446WC/180    Absinthe 31446WC/248    Gooseberry 31446WC/249    Kiwi 31446WC/55

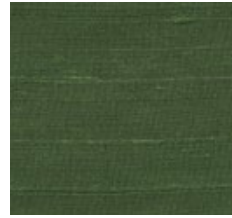
# ORISSA SILK



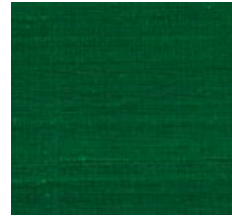
Thyme  
31446WC/53



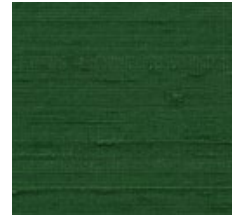
Olive  
31446WC/116



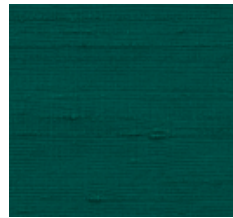
Vineyard  
31446WC/54



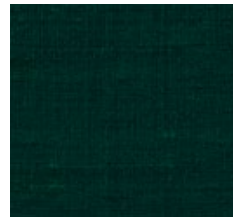
Leaf Green  
31446WC/202



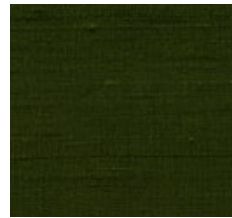
Larch  
31446WC/144



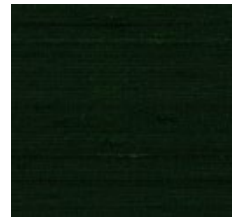
Turtle Green  
31446WC/145



Emerald Green  
31446WC/201



Forest Green  
31446WC/118



Laurel  
31446WC/146



Tartan Green  
31446WC/100



Grayling  
31446WC/231



Silver Blue  
31446WC/215



Cornflower  
31446WC/199



Gin  
31446WC/227



Jasmine  
31446WC/224



Ghost  
31446WC/228



Limestone  
31446WC/229



Pearl Grey  
31446WC/90



Moonstone  
31446WC/43



Nimbus  
31446WC/230



Earl Grey  
31446WC/233



Malt  
31446WC/236



Saltwater  
31446WC/243



Dawn Mist  
31446WC/128



Solitaire  
31446WC/244

# ORISSA SILK



Bermuda  
31446WC/99



Praline  
31446WC/237



Horizon  
31446WC/46



Chinchilla  
31446WC/162



Above Wallcovering: Orissa Silk, Gilver 31446WC/16



Smokestack  
31446WC/238



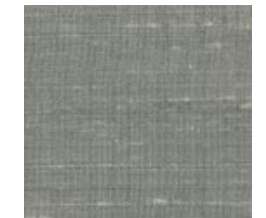
Milk Poppy  
31446WC/261



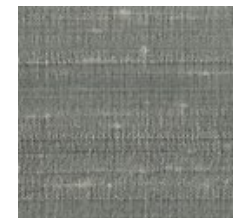
Georgian Grey  
31446WC/232



Moon Rock  
31446WC/234



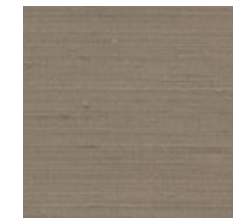
Argent  
31446WC/235



Silver  
31446WC/187



Silver Birch  
31446WC/15



Estuary  
31446WC/239



Gilver  
31446WC/16



Sage  
31446WC/102



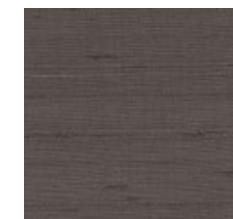
Morning Coat  
31446WC/257



Scree  
31446WC/240



Grisaille  
31446WC/256



Dolphin  
31446WC/242



Magnet  
31446WC/241

# ORISSA SILK



Wedgewood  
31446WC/262



Fern  
31446WC/208



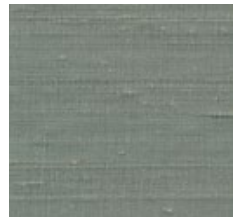
Ocean  
31446WC/214



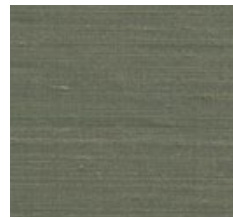
Ocean Wave  
31446WC/219



Marine Green  
31446WC/216



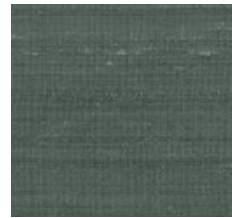
Teal  
31446WC/45



Opal  
31446WC/47



Eucalyptus  
31446WC/52



Jade  
31446WC/48



Mermaid  
31446WC/117



Cambridge  
31446WC/245



Sky  
31446WC/168



Flint  
31446WC/211



Cezanne  
31446WC/263



Birds Egg  
31446WC/51



Kingfisher  
31446WC/49



Azure Blue  
31446WC/188



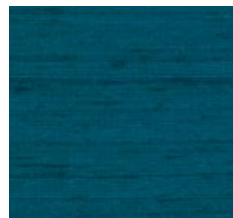
Cobalt Blue  
31446WC/222



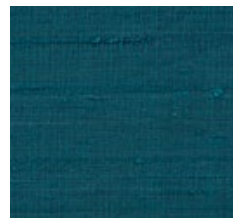
Peacock  
31446WC/109



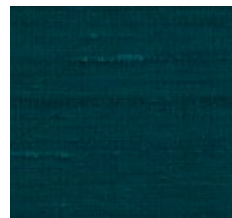
Aqua  
31446WC/192



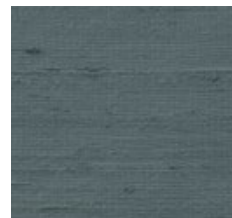
Turquoise  
31446WC/193



Pagoda  
31446WC/169



Pacific  
31446WC/107



Baltic  
31446WC/92



Shadow Blue  
31446WC/106

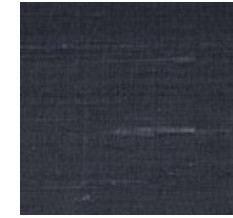
# ORISSA SILK



Norway  
31446WC/264



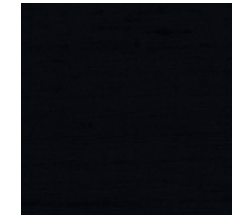
Titan Blue  
31446WC/50



Oriental Blue  
31446WC/123



Marine  
31446WC/190



French Navy  
31446WC/125



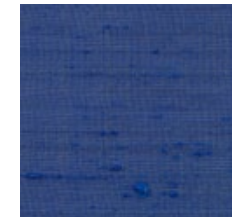
Royal  
31446WC/200



Classic Blue  
31446WC/114



Delph Blue  
31446WC/189



Persian Blue  
31446WC/170



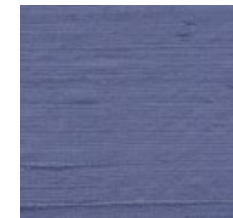
Sapphire  
31446WC/191



Hyacinth  
31446WC/217



Bluebell  
31446WC/179



Gulf  
31446WC/176



Iris  
31446WC/113



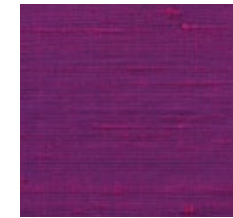
Lavender  
31446WC/220



Sorbet  
31446WC/182



Royal Lilac  
31446WC/81



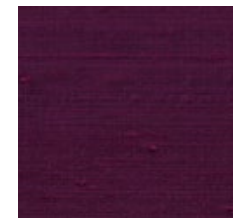
Rosebud  
31446WC/221



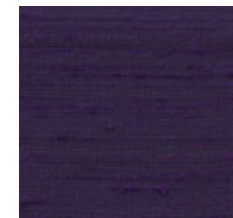
Wild Rose  
31446WC/218



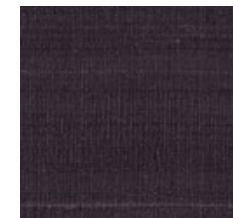
Myrtle  
31446WC/39



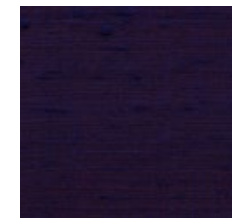
Heather  
31446WC/141



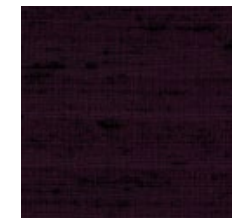
Montana  
31446WC/183



Deep Plum  
31446WC/258



Purple Red  
31446WC/197



Rose Black  
31446WC/206

# ORISSA SILK



Provence 31446WC/42   Grape 31446WC/103   Beaver 31446WC/163   Slate 31446WC/41   Amethyst 31446WC/40



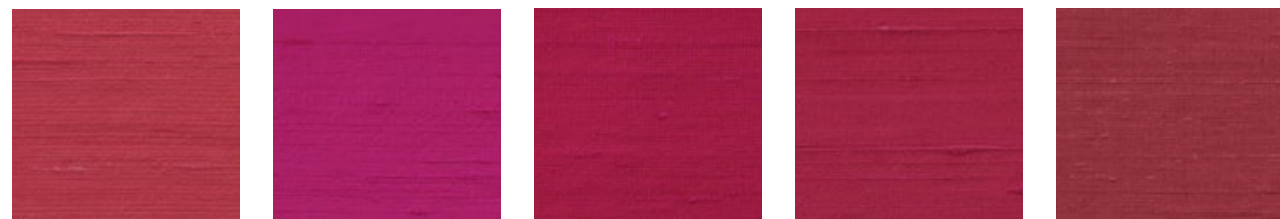
Apricot 31446WC/212   Candy 31446WC/213   Shimmer Pink 31446WC/209   Pink 31446WC/186   Candy Floss 31446WC/210



Salmon Rose 31446WC/223   Blush Pink 31446WC/20   Mauve Glow 31446WC/82   Fondant 31446WC/19   Sophie's Pink 31446WC/255



Terracotta 31446WC/174   Hibiscus 31446WC/31   Watermelon 31446WC/252   Boudoir 31446WC/21   Seville 31446WC/28



Renoir 31446WC/253   Raspberry 31446WC/80   Fuchsia 31446WC/194   Mademoiselle 31446WC/254   Geranium Pink 31446WC/33

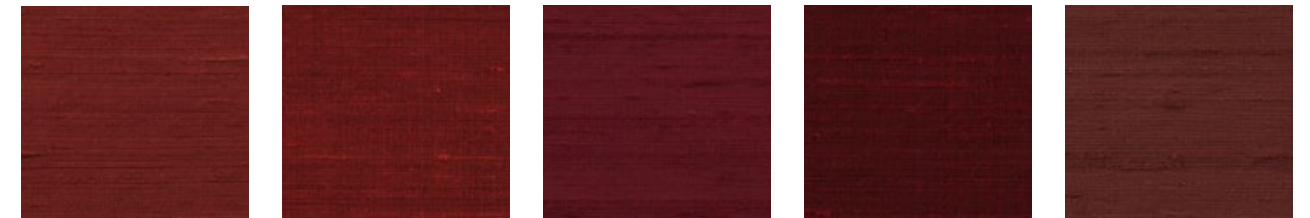
# ORISSA SILK



Damson 31446WC/37   Firefly 31446WC/181   Paprika 31446WC/71   Java 31446WC/251   Scarlet 31446WC/204



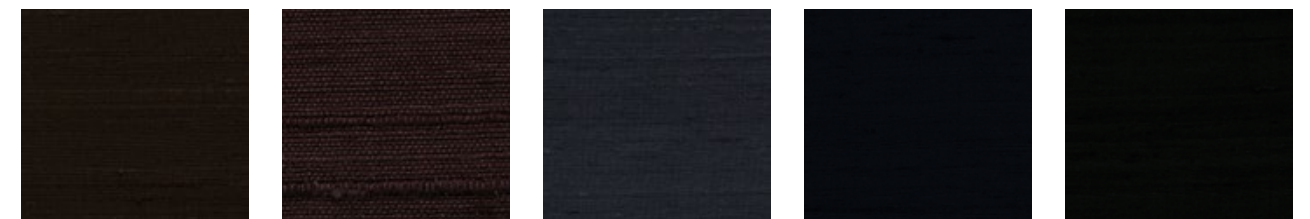
Tartan Red 31446WC/143   Poinsettia 31446WC/78   Carmen 31446WC/34   Emperor Red 31446WC/131   Ruby Red 31446WC/35



Persimmon 31446WC/32   Mars 31446WC/30   Juniper 31446WC/142   Black Red 31446WC/36   Hellebore 31446WC/22



Chestnut 31446WC/29   Claret 31446WC/24   Blackcurrant 31446WC/38   Fig 31446WC/23   Port 31446WC/259



Espresso 31446WC/11   Black Tulip 31446WC/260   Gunmetal 31446WC/184   French Navy 31446WC/125   Black 31446WC/12

# VIENNE SILK

Manufactured using a handwoven process that has remained unchanged for centuries, Vienne Silk is a sustainable silk viscose with an irregular textured surface and an attractive matt finish. A natural choice for decorators.

Quality: 31458WC Composition: 65% Silk, 35% Viscose Colours: 53 Width: 140cms/55" Piece Length: 17mtrs/18.59 yards



Chalk  
31458WC/01



Snow  
31458WC/34



White Sand  
31458WC/12



Grecian Marble  
31458WC/39



Chrysalis  
31458WC/35



Latte  
31458WC/40



Antler  
31458WC/37



Oyster  
31458WC/02



Rosewater  
31458WC/19



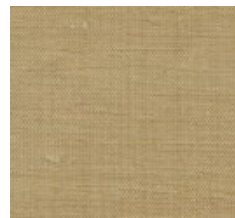
Husk  
31458WC/38



Meringue  
31458WC/11



Golden Corn  
31458WC/03



Muscatelle  
31458WC/04



Cinnamon  
31458WC/07



Palomino  
31458WC/27



Oyster Grey  
31458WC/10



Driftwood  
31458WC/20



Smoky Quartz  
31458WC/13



Baked Clay  
31458WC/16



Wisteria  
31458WC/17



Right Wallcovering: Vienne Silk, Bronze 31458WC/09



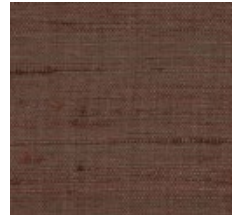
## VIENNE SILK



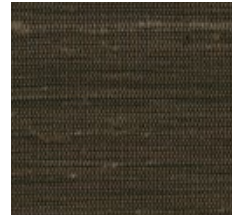
Nutshell  
31458WC/41



Bronze  
31458WC/09



Porcini  
31458WC/29



Badger  
31458WC/42



Buddleia  
31458WC/43



Strawberry  
31458WC/47



Raspberry Coulis  
31458WC/46



Bengal  
31458WC/23



Cornelian  
31458WC/18



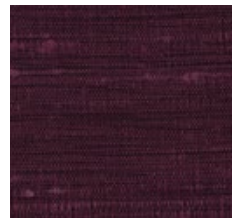
Sumatra  
31458WC/25



Kimono  
31458WC/45



Wineberry  
31458WC/22



Dahlia  
31458WC/44



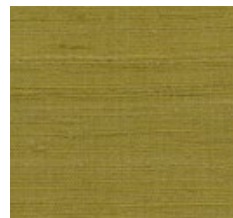
Lychee  
31458WC/49



Citrus  
31458WC/32



Egyptian Gold  
31458WC/26



Lemon-grass  
31458WC/28



Cactus  
31458WC/48



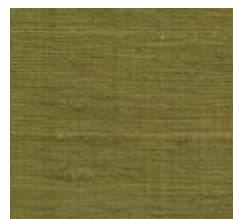
Duck Egg  
31458WC/05



Seaglass  
31458WC/30



Serpentine  
31458WC/21



Asparagus  
31458WC/14



Tobago  
31458WC/15



Swedish Blue  
31458WC/31



Reflection  
31458WC/55

## VIENNE SILK



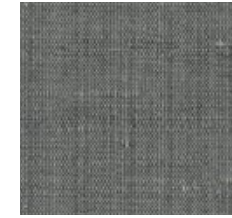
Mountain Stream  
31458WC/52



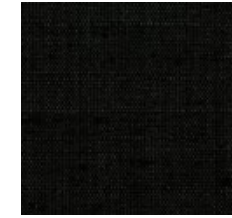
Dove  
31458WC/08



Cosmos  
31458WC/54



River Pearl  
31458WC/24



Black  
31458WC/33



Above Wallcovering: Vienne Silk, Bronze 31458WC/09

## VYNE SILK

Handwoven and fully sustainable, Vyne Silk has the natural texture of wild silk with subtle colour variation in the weft yarn, making each piece utterly unique in appearance and character. The colour palette is inspired by the "New Neutral" movement of soft pastels and subtle greys with a hint of blue, sage and pink. A timeless fabric with a richness providing a luxury element to an interior.

Quality: 31625WC Composition: 100% Silk Colours: 13 Width: 140cms/55" Piece Length: 17mtrs/18.59 yards



Ivory  
31625WC/01



Blanched Almond  
31625WC/03



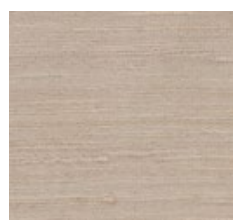
Wild Rice  
31625WC/02



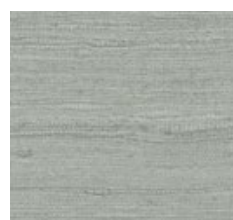
Plover  
31625WC/04



Oolong  
31625WC/11



Rose Quartz  
31625WC/13



French Grey  
31625WC/10



Waterford  
31625WC/12



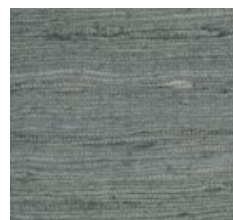
Morel  
31625WC/05



Meteorite  
31625WC/08



Galway  
31625WC/07



Nordic Blue  
31625WC/09



Black Bean  
31625WC/06



Right Wallcovering: Vyne Silk, French Grey 31625WC/10  
Oolong 31625WC/11

# SIMLA SILK

A sustainable matka fabric created from recycled silk known as "noil" or waste. Using unchanged traditional methods, Simla Silk is handcrafted by artisan weavers to produce a fabric of unique character and distinctive matt surface.

Quality: 31463WC Composition: 100% Silk Colours: 29 Width: 140cms/55" Piece Length: 17mtrs/18.59 yards



Above Wallcovering: Simla Silk, Oatmeal 31463WC/02



# KASHMIRI SILK

A pure silk matka fabric with a matt surface and a natural colour palette of 22 sophisticated shades.  
This beautiful basketweave fabric will create a luxurious wallcovering.

Quality: 31641WC Composition: 100% Silk Colours: 22 Width: 137cms/55" Piece Length: 17mtrs/18.59 yards

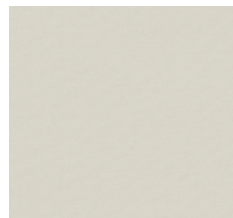


Right Wallcovering: Kashmiri Silk, Fawn 31641WC/22

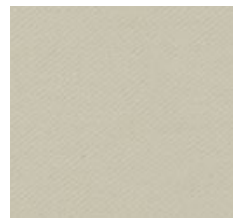
# CONNAUGHT SILK

Connaught Silk is characterised by its elegant matt sheen, created by a luxurious marriage of silk and merino wool. Perfect for a smart tailored look.

Quality: 31519WC Composition: 56% Silk, 44% Wool Colours: 49 Width: 140cms/55" Piece Length: 24mtrs /26.25 yards



Mother of Pearl  
31519WC/03



Alpine  
31519WC/01



Feather  
31519WC/28



Pumice  
31519WC/29



Mineral  
31519WC/05



Dune  
31519WC/12



Whisper White  
31519WC/66



Macaroon  
31519WC/04



Pastis  
31519WC/08



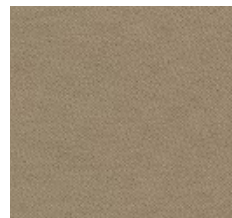
Chateau Grey  
31519WC/37



Sweet Hazel  
31519WC/60



Rye  
31519WC/27



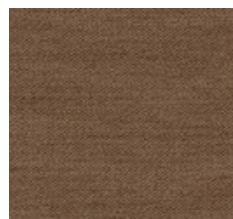
Ostrich  
31519WC/26



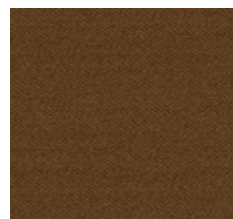
Mushroom  
31519WC/21



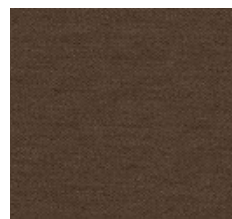
Wind Chime  
31519WC/59



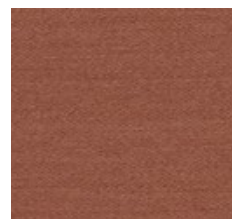
Acorn  
31519WC/14



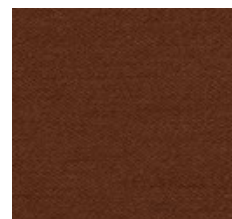
Tan  
31519WC/64



Burmese  
31519WC/22



Sienna  
31519WC/63



Russet  
31519WC/65



Right Wallcovering: Connaught Silk, Ballerina 31519WC/34

# CONNAUGHT SILK



Kashmir 31519WC/51    Jalapeno 31519WC/16    Carmine 31519WC/18    Cossack 31519WC/50    Elizabethan 31519WC/17



Ballerina 31519WC/34    Blush 31519WC/33    Rosewater 31519WC/62    Pink Salt 31519WC/61    Mushroom 31519WC/21



Frosted Sage 31519WC/53    Greenfinch 31519WC/31    Corona 31519WC/49    Glory 31519WC/48    Wild Fennel 31519WC/47



Cardamon 31519WC/13    Smoke Green 31519WC/54    Samphire 31519WC/15    Watercress 31519WC/55    Monkey Puzzle 31519WC/46



Bali 131519WC/11    Meconopsis 31519WC/42    Van Gogh Blue 31519WC/43    Moonlit 31519WC/58    Midsummer Night 31519WC/44

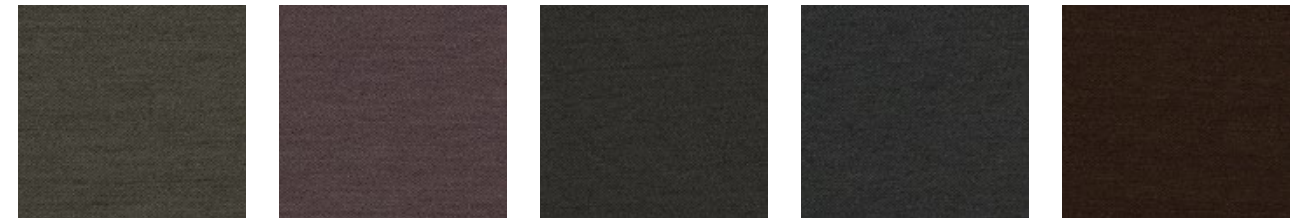
# CONNAUGHT SILK



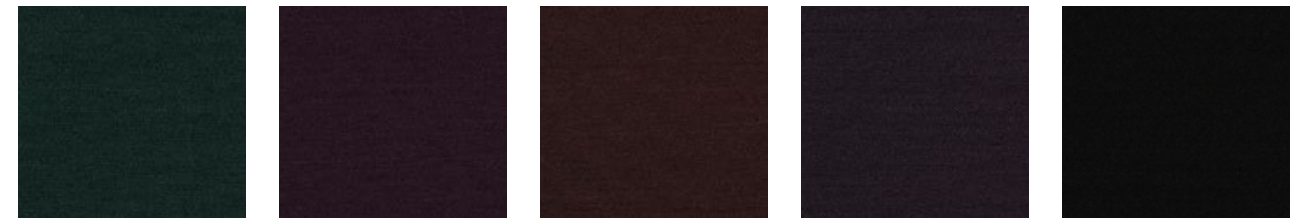
Alice Blue 31519WC/40    Surf 31519WC/56    Alfresco 31519WC/09    High Tide 31519WC/41    Vista 31519WC/57



Morandi Grey 31519WC/35    Antoinette 31519WC/30    Chateau Grey 31519WC/37    Lakestone 31519WC/06    Slate Blue 31519WC/10



Lava Stone 31519WC/38    Dried Lavender 31519WC/23    Graphite 31519WC/07    Cinder 31519WC/39    Ganache 31519WC/25



Spruce 31519WC/45    Aster 31519WC/19    Tamarind 31519WC/20    Blueberry 31519WC/24    Caviar 31519WC/32

# ASTOR FAUX SILK

Elegantly replicating the opulent look and feel of a natural silk dupion, Astor is a polyester faux silk that offers practicality with an unmistakable touch of luxury.

Quality: 31554WC Composition: 100% Polyester Colours: 110 Width: 140cms/55" Piece Length: 24mtrs /26.25 yards

				
White 31554WC/02	Light Ivory 31554WC/03	Ivory 31554WC/01	Origami 31554WC/04	Ballerina 31554WC/102
				
Illusion 31554WC/36	Hepplewhite 31554WC/38	Oat 31554WC/58	Eider Down 31554WC/05	Coconut 31554WC/06
				
Stockholm 31554WC/39	Pale Duck Egg 31554WC/100	Luna 31554WC/37	Sea Salt 31554WC/59	Mezze 31554WC/87
				
Scallop 31554WC/07	Croft 31554WC/62	Lapin 31554WC/08	Reindeer 31554WC/09	Jute 31554WC/63

Right Wallcovering: Astor Faux Silk, Okra 31554WC/77



## ASTOR FAUX SILK



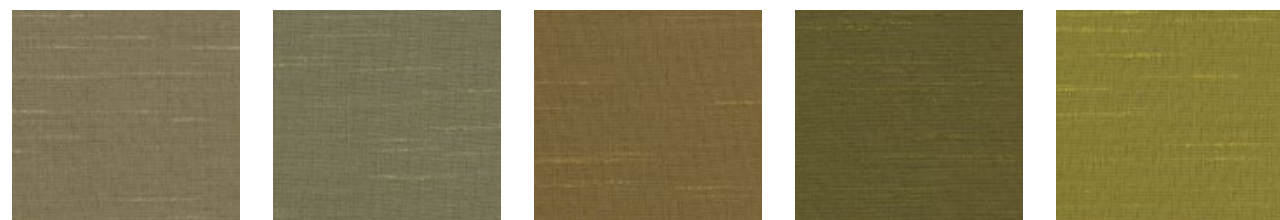
Buttercream 31554WC/86    Corsica 31554WC/19    Seychelles 31554WC/88    Loaf 31554WC/17    Peanut 31554WC/20



Windswept 31554WC/18    Narcissus 31554WC/85    Mellow Yellow 31554WC/84    Grapefruit 31554WC/21    Celandine 31554WC/22



Golden Amber 31554WC/83    Goldcrest 31554WC/23    Lime Daiquiri 31554WC/81    Mizuna 31554WC/82    Pesto 31554WC/25

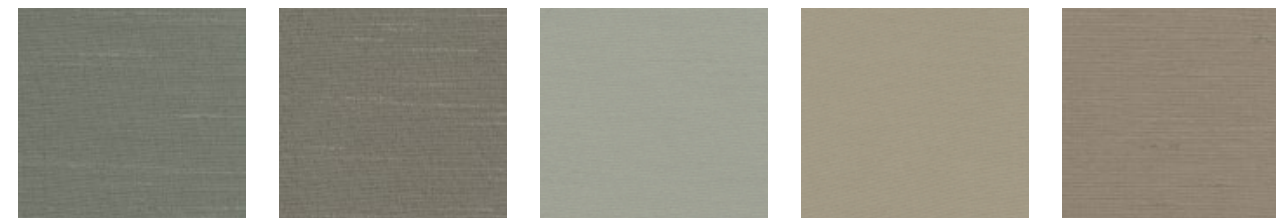


Oxide 31554WC/15    Olivewood 31554WC/79    Icon 31554WC/16    Green Fig 31554WC/80    Sour Green 31554WC/24



Botanic 31554WC/26    Okra 31554WC/77    Mallard 31554WC/67    Emerald City 31554WC/68    Shale Green 31554WC/28

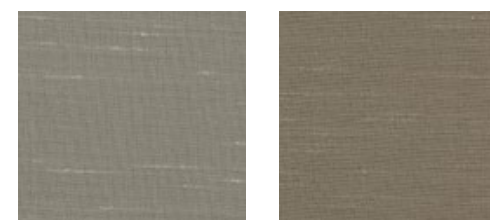
## ASTOR FAUX SILK



Shale 31554WC/78    Wood Smoke 31554WC/61    Chateau 31554WC/29    Reindeer 31554WC/09    Jute 31554WC/63



Irish Cream 31554WC/14    Cuckoo 31554WC/10



Koi 31554WC/12    Seagrass 31554WC/60



Barn 31554WC/11    Burnished Chocolate 31554WC/64



Bourbon 31554WC/13    Larkspur 31554WC/42



Above Wallcovering: Astor Faux Silk, Okra 31554WC/77



## ASTOR FAUX SILK



Cherry Blossom 31554WC/91   Tutu 31554WC/90   Dusty Blush 31554WC/89   Mallow 31554WC/99   Lotus Flower 31554WC/93



Gambas 31554WC/92   Love 31554WC/46   Beetroot 31554WC/94   Boutique 31554WC/45   Pumpkin 31554WC/51



Clementine 31554WC/50   Cardinal 31554WC/47   Cranberry 31554WC/95   Medieval 31554WC/48   Phoenix 31554WC/49



Bunting 31554WC/73   Sky's The Limit 31554WC/76   Scandi 31554WC/101   Venice 31554WC/31   Surf Spray 31554WC/27

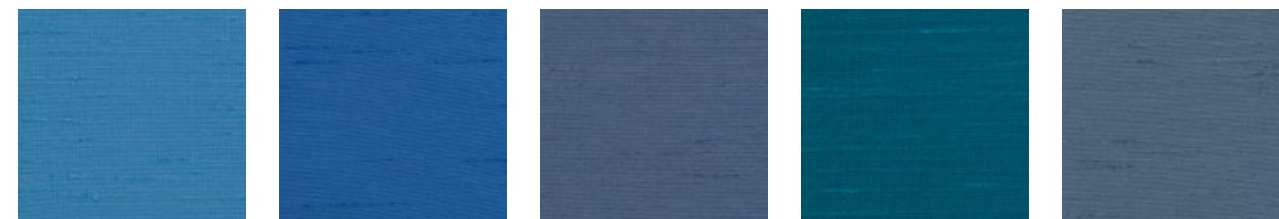


Aquarius 31554WC/66   Liberty 31554WC/32   Waterside 31554WC/75   Azores 31554WC/55   Shell 31554WC/98

## ASTOR FAUX SILK



Titanium 31554WC/40   Silver Mist 31554WC/97   Rainstorm 31554WC/30   Silver Charm 31554WC/57   Loch Blue 31554WC/56



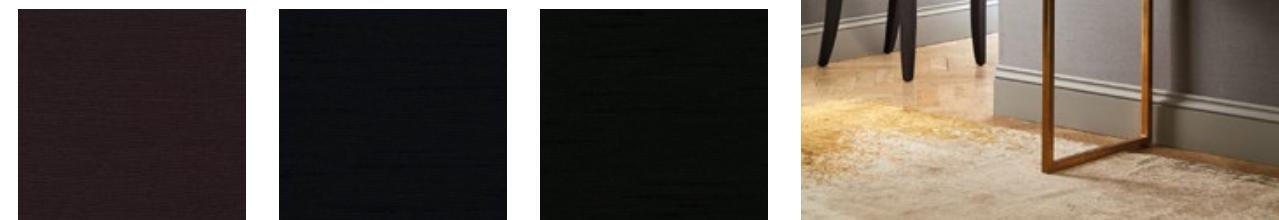
Hockney Blue 31554WC/69   Cruise 31554WC/70   Cornwall Riviera 31554WC/72   Voyage 31554WC/33   Padstow 31554WC/74



Crocus 31554WC/96   Chambray 31554WC/71   Bloom 31554WC/43



Nautilus 31554WC/65   Breton 31554WC/34   Whale 31554WC/41



Calla Lily 31554WC/44   Navy 31554WC/35   Black 31554WC/53



Above Wallcovering: Astor Faux Silk, Luna 31554WC/37

# CHILTERN FAUX SILK

This faux silk emulates the look and feel of a real wild silk with the distinctive natural slub running across the weft of the cloth. Available in a wide range of shot and flat colours from soft neutrals to stong greens and yellow, lavender, pinks, terracotta and denim.

Quality: 31626WC Composition: 100% Polyester Colours: 31 Width: 143cms/56.3" Piece Length: 17mtrs/18.59 yards



Ivory  
31626WC/01



Almond Milk  
31626WC/02



Twine  
31626WC/03



Bisque  
31626WC/31



Wood Ash  
31626WC/28



Gentle Breeze  
31626WC/18



Sparrow  
31626WC/05



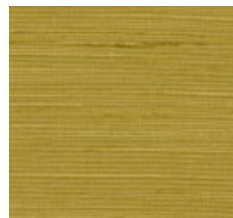
Faroe  
31626WC/04



Macadamia  
31626WC/06



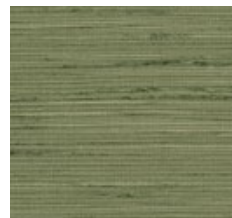
Acai  
31626WC/29



Lemon Peel  
31626WC/23



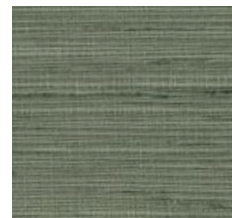
Granita  
31626WC/22



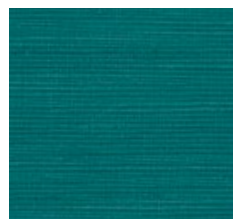
Green Oasis  
31626WC/20



Lemon Balm  
31626WC/21



Winter Moss  
31626WC/19



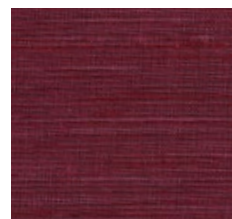
Bora Bora  
31626WC/15



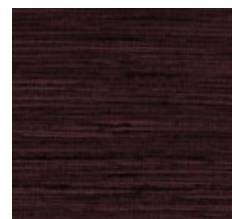
Tickled Pink  
31626WC/27



Parma Violet  
31626WC/26



Barbados  
31626WC/24



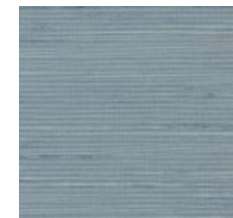
Cabernet  
31626WC/25



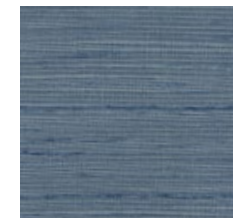
Above Wallcovering: Chiltern Faux Silk, Winter Moss 31626WC/19



Aquarelle  
31626WC/16



Splash  
31626WC/11



Bel Air  
31626WC/12



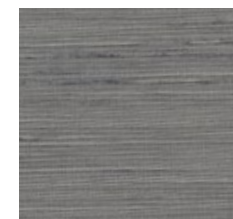
Silver Sconse  
31626WC/09



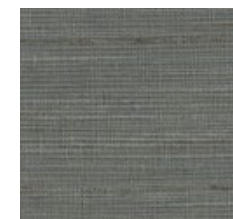
Midwinter  
31626WC/07



Potter's Clay  
31626WC/08



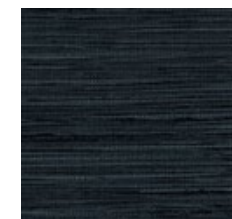
Skyrocket  
31626WC/10



Blue Heron  
31626WC/17



Iron Gate  
31626WC/14



Evening  
31626WC/13

# LISMORE LINEN

A timeless plain linen available in a range of soothing colours, Lismore is made from natural yarn, making it a sustainable fabric of understated elegance.

Quality: 31658WC Composition: 100% Linen Colours: 24 Width: 142cms/55.9" Piece Length: 17mtrs/18.59 yards

					
White 31658WC/02	Ivory 31658WC/01	Chamomile 31658WC/03	Sunlight 31658WC/08	Natural 31658WC/05	Mineral 31658WC/06
					
Manilla 31658WC/04	Sand 31658WC/07	Plaster 31658WC/21	Pink Coral 31658WC/22	Terracotta 31658WC/23	Crab Apple 31658WC/10
					
Green Almond 31658WC/09	Chive 31658WC/11	Sage Green 31658WC/12	Eau de Nil 31658WC/17	Estate Blue 31658WC/20	Lovat Blue 31658WC/18
					
Morandi Grey 31658WC/24	Steel 31658WC/13	Glacier 31658WC/19	Storm 31658WC/14	Blazer 31658WC/16	Ink 31658WC/15

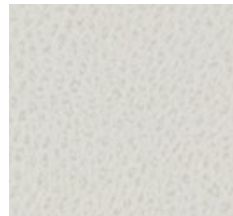


Right Wallcovering: Lismore Linen, Plaster 31658WC/21

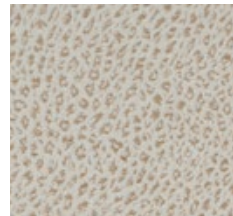
# LEOPARD

Equally suited to modern and traditional interiors, this smart, semi-plain jacquard features a striking leopard pattern woven across a textural ground.

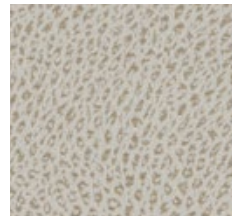
Quality: 31665WC Composition: 41% Polyester, 24% Viscose, 21% Linen, 14% Acrylic Colours: 15  
Width: 136cms/53.5" Piece Length: 17mtrs/18.59 yards



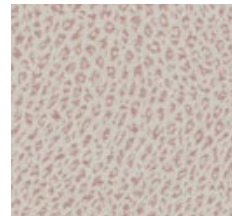
Ivory  
31665WC/01



Parget  
31665WC/02



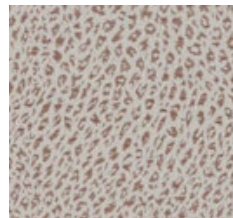
Savannah  
31665WC/04



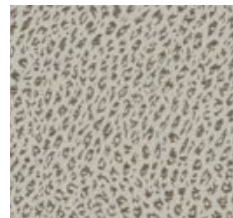
Confetti  
31665WC/06



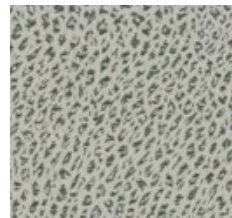
Merle  
31665WC/03



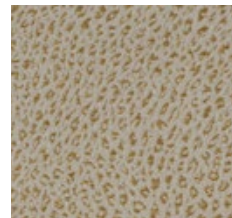
Cockle Pink  
31665WC/05



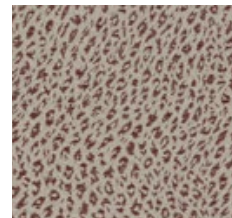
Selkie  
31665WC/09



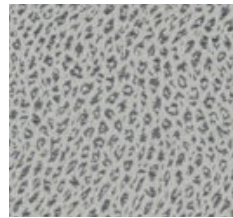
Viridian  
31665WC/10



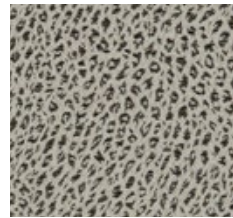
Gold  
31665WC/08



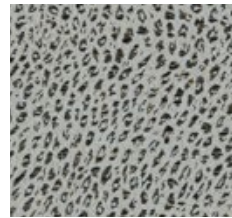
Malbec  
31665WC/07



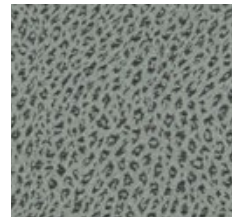
Tidal  
31665WC/12



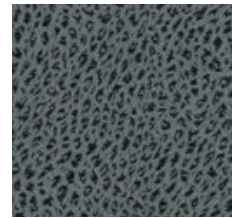
Serval  
31665WC/14



Snow Leopard  
31665WC/13



Slate Blue  
31665WC/11



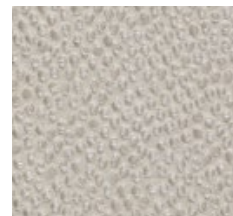
Ink  
31665WC/15



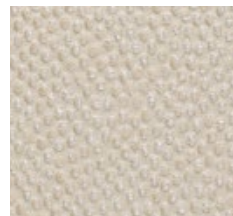
# SHAGREEN SILK

Chic and glamorous Shagreen Silk is inspired by exotic shark and ray leathers. Its bold and striking aesthetic is sure to add singular design focus and character to any project.

Quality: 31537WC Composition: 60% Poly, 15% Silk, 15% Wool, 10% Acrylic Colours: 17  
Width: 135cms/53" Piece Length: 17mtrs/18.59 yards



Crystal  
31537WC/01



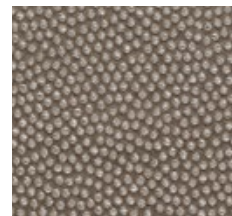
Froth  
31537WC/02



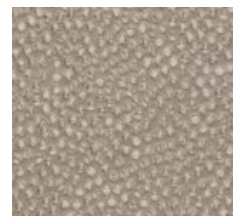
Lentil  
31537WC/03



Cowrie  
31537WC/17



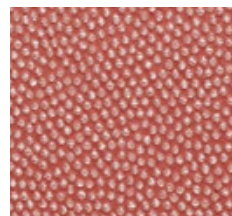
Stingray  
31537WC/04



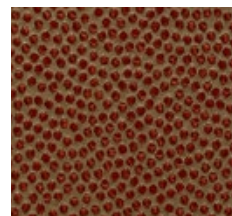
Cassava  
31537WC/15



Bonbon  
31537WC/23



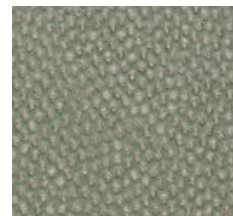
Coral  
31537WC/24



Kilim  
31537WC/10



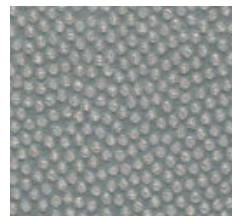
Ochre  
31537WC/16



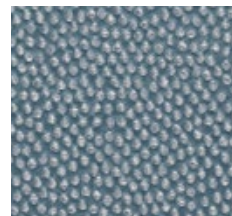
Stepping Stone  
31537WC/05



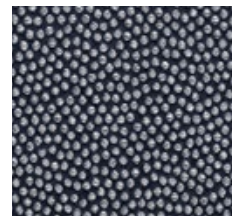
Dovecote  
31537WC/19



Freshwater  
31537WC/20



Seafoam  
31537WC/21



Blue Jay  
31537WC/22



Guineafowl  
31537WC/18



Pepper  
31537WC/09



Right Wallcovering: Shagreen Silk, Crystal 31537WC/01

## PAPERBACKED BRAIDS & TRIMS

Braids and trims can be paperbacked to create borders, providing the perfect finishing touch to frame fabric wallcoverings, conceal seams and enhance visual appeal through the incorporation of colour, pattern and texture.



Tudor Braid Grey  
9003/01



Tudor Braid Terracotta  
9003/02



Tudor Braid Green  
9003/03



Tudor Braid Ink  
9003/04



Hatchett Braid Grey/Gold  
9008/01



Hatchett Braid Pink/Orange  
9008/02



Hatchett Braid Blue/Green  
9008/03



Apollo Key Velvet Braid  
Mineral 9015/01



Apollo Key Velvet Braid  
Calendula 9015/02



Apollo Key Velvet Braid  
Seashell Coral 9015/03



Apollo Key Velvet Braid  
Sapphire Blue 9015/04



Cora Braid Natural  
31637/02



Cora Braid Frost  
31637/03



Cora Braid Gold  
31637/04



Cora Braid Terracotta  
31637/05



Cora Braid Silver Grey  
31637/01



Right: Vienne Silk Grecian Marble, 31458/39,  
Apollo Key Velvet Braid Sapphire Blue, 9015/04

## BRAIDS & TRIMS



Panthera Braid Natural  
9010/01



Panthera Braid Harvest Gold  
9010/02



Panthera Braid Coral Spice  
9010/03



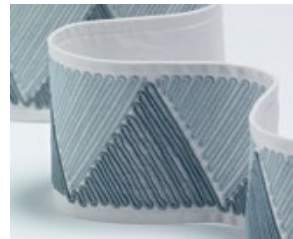
Panthera Braid Moonlit Blue  
9010/04



Scala Braid Natural  
9000/01



Scala Braid Grey  
9000/02



Scala Braid Blue  
9000/03



Scala Braid Black  
9000/04



Apiary Trim Mineral  
9012/01



Apiary Trim Sundrenched  
9012/02



Apiary Trim Glowing Embers  
9012/03



Apiary Trim Burnt Blossom  
9012/04



Apiary Trim French Grey  
9012/05



Apiary Trim Above The Clouds  
9012/06



Burford Braid Mineral  
9006/01



Burford Braid Lupine  
9006/02



Burford Braid Ink  
9006/03



Honeysuckle Braid Mineral  
9011/01



Honeysuckle Braid Woodsage  
9011/02



Honeysuckle Braid French Grey  
9011/03

## BRAIDS & TRIMS



Honeysuckle Braid Gentian Blue  
9011/04



Elm Braid Natural  
9007/01



Elm Braid Pink  
9007/02



Elm Braid Green  
9007/03



Elm Braid Blue  
9007/04



Elm Braid Storm  
9007/05



Elm Braid Cardamom  
9007/06



Elm Braid French Grey  
9007/07



Elm Braid Midsummer Night  
9007/08



Ribbon Trim Feather  
9004/01



Ribbon Trim Almond  
9004/02



Ribbon Trim Pink  
9004/03



Ribbon Trim Green  
9004/04



Ribbon Trim Antoinette  
9004/05



Ribbon Trim Slate Blue  
9004/06

## BESPOKE WALLCOVERING SERVICE

Virtually all our wonderful fabrics can be paperbacked to create wallcoverings. With over 700 plain colours, together with fabulous woven patterns there is a dazzling range of possibilities.



## ADVICE & INFORMATION

**Characteristics of silk wallcoverings:** The finished effect of fabric wallcoverings is panelled and not seamless. As natural fabrics are produced using natural fibres there may be irregularities and variations which will be especially visible as the fabric is laid flat, in particular there may be variations in shade and weave which are characteristics of natural fabrics. We recommend the use of cords or trims along the seams, in particular with thick fabrics, to protect and hide seams.

**Hanging instructions:** Please do not attempt to hang wallcoverings without reading the silk wallcovering advice sheet on the website [https://james-hare.com/media/17096/james-hare-wallcovering-advice-sheets-2021\\_2.pdf](https://james-hare.com/media/17096/james-hare-wallcovering-advice-sheets-2021_2.pdf). The company declines all responsibility for problems which may occur during installation due to the inexperience of the decorator. Before hanging, the wallcovering must be checked to ensure that it meets the client's requirements and expectations. Claims will not be accepted for any reason whatsoever after the silk has been hung by the customer, their staff, agents or decorator. Please refer to our website for full details on wallcovering installation.

**Horizontal weft lines:** The fabric is put under tension during the paper backing process which may result in the horizontal weave becoming distorted. This is commonly referred to as smiling or frowning and is a natural characteristic of a fabric wallcovering. Wallcoverings will not be accepted back if this occurs. Horizontal weaves cannot be matched when applied to the wall.

**Lead time:** The lead time will be quoted at the time of placing the order but is usually 2 weeks.

**Minimum order:** The minimum order for wallcoverings is 10 metres/11 yards, if less than 10 metres/11 yards is ordered there will be a surcharge.

**Pattern match:** Wallcoverings cannot be pattern matched.

**Piece lengths:** Piece lengths vary between 17-24 metres/18.6-24.3 yards. An allowance of 10% should be added to each piece to accommodate shortfalls.

**Quality control:** Before hanging, check that you and your client are happy with the quality of various rolls. No liability will be accepted for alleged defects apparent prior to hanging.

**Returns:** As the wallcoverings are made to order, we are unable to accept returns.

**Samples:** Samples of the fabrics are available upon request. Whilst we may not have paper backed samples available for every shade of fabric, we shall have a sample of the same quality paper backed.

**Stain Repellent:** This finish helps to minimise stains. It is applied before the fabric or trim is paperbacked, adding an additional 2 weeks to the production timeline.

**Trimming:** Wallcoverings are supplied untrimmed, we recommend they are trimmed on site by a professional to avoid being damaged in transit.

[www.james-hare.com](http://www.james-hare.com)





JH

James Hare Limited Monarch House 7 Queen Street Leeds LS1 2TW UK  
Telephone +44 (0)113 243 1204 sales@james-hare.com www.james-hare.com