



JAMES HARE

SINCE 1865



Braids & Trims



## Braids & Trims

Designed to flawlessly coordinate with the renowned James Hare silk range, trims serve as the perfect finishing touch to any interior scheme, adding an extra layer of sophistication and charm. From curtains to cushions, wallcoverings to upholstery, trims seamlessly enhance the aesthetic appeal of your space.

Explore the exquisite collection featuring playful fringes and ribbons, elegant tassels and braids, each meticulously crafted to elevate every detail of your interior design.

We hope you are inspired.

[www.james-hare.com](http://www.james-hare.com)

Braids .....	4	Drops and Fringes .....	15
Piping .....	11	Colour Stories .....	18
Ribbons.....	12	Application Ideas.....	22



# Braids

## ELM BRAID

Quality: 9007  
 Comp: 100% Linen Width: 8cm/3.1" Ver Repeat: 1.5cm/0.6"



Natural  
9007/01



Pink  
9007/02



Green  
9007/03



Blue  
9007/04



**NEW**

Storm  
9007/05



**NEW**

Cardamom  
9007/06



**NEW**

French Grey  
9007/07



**NEW**

Midsummer Night  
9007/08

## HONEYSUCKLE BRAID

Quality: 9011  
 Comp: 100% Linen Width: 8cm/3.1" Ver Repeat: 3cm/1.18"



**NEW**

Mineral  
9011/01



**NEW**

Woodsage  
9011/02



**NEW**

French Grey  
9011/03



**NEW**

Gentian Blue  
9011/04





## Braids

### APOLLO KEY BRAID

Quality: 9015

Comp: 60% Viscose, 40% Cotton Width: 9.3cm/3.66" Ver Repeat: 8.40cm/3.30"



Mineral  
9015/01



Calendula  
9015/02



Seashell Coral  
9015/03



Sapphire Blue  
9015/04

### PANTHERA BRAID

Quality: 9010

Comp: 65% Viscose, 35% Cotton Width: 9.7cm/3.82" Ver Repeat: 23.6cm/9.17"



Natural  
9010/01



Harvest Gold  
9010/02



Coral Spice  
9010/03



Moonlit Blue  
9010/04

### HATCHETT BRAID

Quality: 9008

Comp: 40% Spun Polyester, 30% Viscose, 30% Acrylic Width: 7.2cm/2.8" Ver Repeat: 7.8cm/3.07"



Grey/Gold  
9008/01



Pink/Orange  
9008/02



Blue/Green  
9008/03

# Braids

## TUDOR BRAID

Quality: 9003  
 Comp: 100% Linen Width: 10cm/3.94" Ver Repeat: 1.7cm/0.67"



Grey  
9003/01



Terracotta  
9003/02



Green  
9003/03



Ink  
9003/04

## CORA BRAID

Quality: 31637  
 Comp: 68% Cotton, 32% Viscose Width: 8cm/3.15" Ver Repeat: 5cm/1.97"



Gold  
31637/04



Terracotta  
31637/05



Natural  
31637/02



Silver Grey  
31637/01

## ARMILLA BRAID

Quality: 31636  
 Comp: 66% Cotton, 34% Viscose Width: 7.5cm/2.95" Ver Repeat: 2.5cm/0.98"



Frost  
31637/03



Blush  
31636/02



Jade  
31636/03





# Braids and Piping

## SCALA BRAID

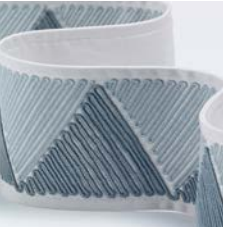
Quality: 9000  
 Comp: 78% Cotton, 22% Viscose Width: 8cm/3.15" Ver Repeat: 7.5cm/2.95"



Natural  
9000/01



Grey  
9000/02



Blue  
9000/03



Black  
9000/04

## BURFORD BRAID

Quality: 9006  
 Comp: 100% Cotton Width: 8.5cm/3.3" Ver Repeat: 2.5cm/1"



Mineral  
9006/01



Lupine  
9006/02



Ink  
9006/03

## JESTER PIPING

Quality: 9014  
 Comp: 48% Cotton, 30% Viscose, 22% Polyester Width: 1.9cm/0.75"

**NEW**



Morandi Grey  
9014/01

**NEW**



French Grey  
9014/02

**NEW**



Lemon and Lime  
9014/03

**NEW**



Cherry Rose  
9014/04

# Ribbons

## APIARY TRIM

Quality: 9012  
Comp: 97% Viscose, 3% Polyester Width: 5.5cm/2.17"



**NEW**

Mineral  
9012/01



**NEW**

Sundrenched  
9012/02



**NEW**

Glowing Embers  
9012/03



**NEW**

Burnt Blossom  
9012/04

## RIBBON TRIM

Quality: 9004  
Comp: 100% Viscose Width: 4cm/1.57"



**NEW**

French Grey  
9012/05



**NEW**

Above the Clouds  
9012/06



Feather  
9004/01



Almond  
9004/02



Pink  
9004/03



Green  
9004/04



Antoinette  
9004/05



Slate Blue  
9004/06





## Drops and Fringes

### BIBURY DROPS

Quality: 9005

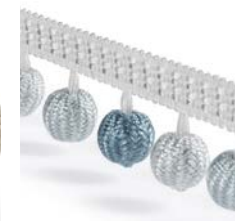
Comp: 61% Plastic Beads, 22% Polyester, 15% Acrylic, 2% Polyamide Drop: 4cm/1.57"



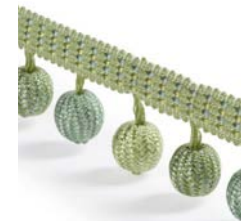
Ivory  
9005/01



Natural  
9005/02



Blue  
9005/03



Green  
9005/04

### HOWDAH FRINGE

Quality: 9009

Comp: 59% Polyester, 38% Acrylic, 3% Polyamide Drop: 7cm/2.7"



Terracotta  
9005/05



Pink  
9005/06



Natural  
9009/01



Pink  
9009/02

### ANGEL FALLS FRINGE

Quality: 9013

Comp: 95% Viscose, 5% Polyester Drop: 20cm/7.87"



Green  
9009/03



Mineral  
9013/01



Soft Sage  
9013/02



Mira Blue  
9013/03

**NEW**

**NEW**

**NEW**



# Fringes

## BRUSH FRINGE

Quality: 9001

Comp: 99% Viscose, 1% Polyester Drop: 4cm/1.57"



Morandi Grey  
9001/01



Antoinette  
9001/04



Almond  
9001/02



Mushroom  
9001/06



Feather  
9001/03



Terracotta  
9001/05

## DOUBLE FRINGE

Quality: 9002

Comp: 100% Viscose Drop: 4cm/1.57"



Morandi Grey  
9002/01



Antoinette  
9002/04



Almond  
9002/02



Feather  
9002/03



# COLOUR STORIES

## NEUTRAL



Ribbon Trim, Feather 9004/01  
 Apollo Key Braid, Mineral 9015/01  
 Honeysuckle Braid, Mineral 9011/01  
 Elm Braid, Natural 9007/01  
 Apiary Trim, Mineral 9012/01  
 Bibury Drops, Ivory 9005/01



Howdah Fringe, Natural 9009/01  
 Ribbon Trim, Almond 9004/02  
 Burford Braid, Mineral 9006/01  
 Scala Braid, Natural 9000/01  
 Cora Braid, Natural 31637/02  
 Bibury Drops, Natural 9005/02



Double Fringe, Almond 9002/02  
 Angel Falls Fringe, Mineral 9013/01  
 Brush Fringe, Almond 9001/02  
 Panthera Braid, Natural 9010/01  
 Jester Piping, Morandi Grey 9014/01  
 Double Fringe, Morandi Grey 9002/01



Cora Braid, Frost 31637/03  
 Scala Braid, Grey 9000/02  
 Double Fringe, Antoinette 9002/04  
 Brush Fringe, Morandi Grey 9001/01  
 Tudor Braid, Grey 9003/01  
 Elm Braid, Storm 9007/05



Brush Fringe, Mushroom 9001/06  
 Cora Braid, Silver Grey 31637/01  
 Scala Braid, Black 9000/04

# COLOUR STORIES

## GREEN



Elm Braid, Green 9007/03  
 Ribbon Trim, Green 9004/04  
 Honeysuckle Braid, Woodsage 9011/02  
 Tudor Braid, Green 9003/03  
 Bibury Drops, Green 9005/04  
 Angel Falls Fringe, Soft Sage 9013/02



Howdah Fringe, Green 9009/03  
 Hatched Braid, Blue/Green 9008/03  
 Jester Piping, French Grey 9014/02  
 Elm Braid, French Grey 9007/07  
 Honeysuckle Braid, French Grey 9011/03  
 Apiary Trim, French Grey 9012/05

## BLUE



Bibury Drops, Blue 9005/03  
 Apiary Trim, Above the Clouds 9012/06  
 Honeysuckle Braid, Gentian Blue 9011/04  
 Ribbon Trim, Antoinette 9004/05  
 Scala Braid, Blue 9000/03  
 Angel Falls Fringe, Mira Blue 9013/03



Elm Braid, Blue 9007/04  
 Armilla Braid, Jade 31636/03  
 Ribbon Trim, Slate Blue 9004/06  
 Brush Fringe, Antoinette 9001/04  
 Elm Braid, Midsummer Night 9007/08  
 Panthera Braid, Moonlit Blue 9010/04



Apollo Key Braid, Sapphire Blue 9015/04  
 Burford Braid, Ink 9006/03  
 Tudor Braid, Ink 9003/04

# COLOUR STORIES

## GOLD



Cora Braid, Gold  
31637/04



Apollo Key Braid,  
Calendula 9015/02



Elm Braid, Cardamom  
9007/06



Apiary Trim, Sundrenched  
9012/02



Panthera Braid,  
Harvest Gold 9010/02



Hatchett Braid, Grey/Gold  
9008/01



Jester Piping,  
Lemon and Lime 9014/03

## PINK



Elm Braid, Pink  
9007/02



Armilla Braid, Blush  
31636/02



Brush Fringe, Feather  
9001/03



Double Fringe, Feather  
9002/03



Burford Braid, Lupine  
9006/02



Apiary Trim, Burnt Blossom  
9012/04



Ribbon Trim, Pink  
9004/03



Bibury Drops, Pink  
9005/06



Jester Piping, Cherry Rose  
9014/04



Bibury Drops, Terracotta  
9005/05



Apiary Trim,  
Glowing Embers 9012/03



Howdah Fringe, Pink  
9009/02



Cora Braid, Terracotta  
31637/05



Tudor Braid, Terracotta  
9003/02



Panthera Braid,  
Coral Spice 9010/03



Brush Fringe, Terracotta  
9001/05



Hatchett Braid,  
Pink/Orange 9008/02



Apollo Key Braid,  
Seashell Coral 9015/03



## APPLICATION IDEAS



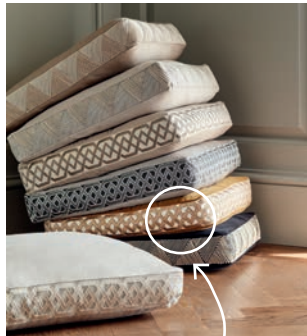
Curtains



Blinds



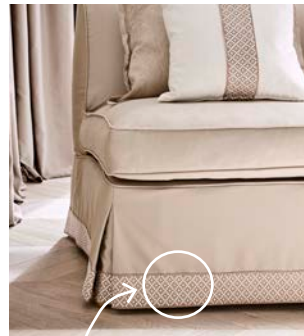
Pellets



Cushions



Upholstery



Skirting



Headboards



Lampshades



Four Poster Beds

## BESPOKE BRAID PAPERBACKING SERVICE

Virtually all braids and trims can be paperbacked to create borders. Providing the perfect finishing touch to frame fabric wallcoverings, conceal seams, and enhance visual appeal through the incorporation of colour, pattern, and texture.



Design Tip: Get creative using trims together





JH

James Hare Limited Monarch House 7 Queen Street Leeds LS1 2TW UK  
Telephone +44 (0)113 243 1204 sales@james-hare.com  
www.james-hare.com