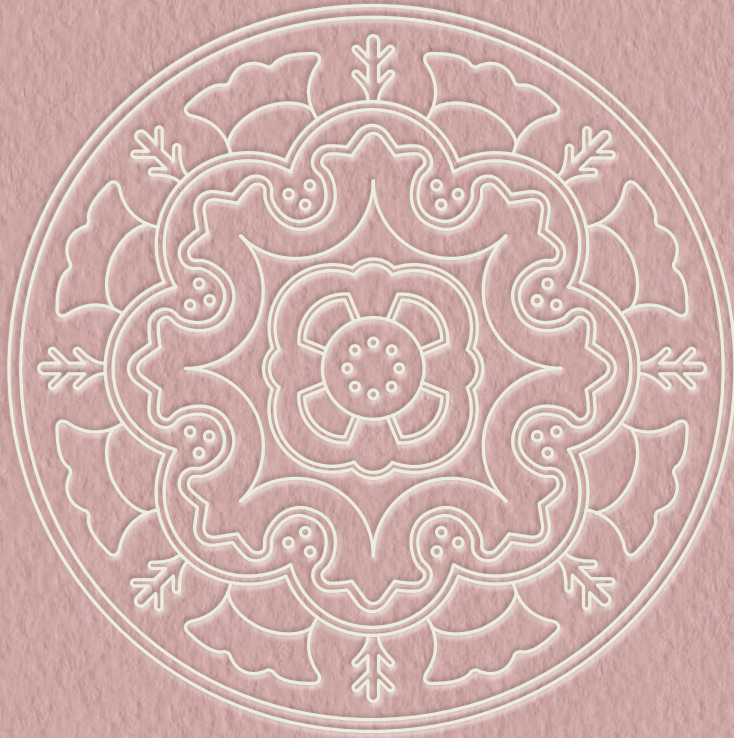




JAMES HARE

SINCE 1865



CAMPDEN

CAMPDEN

INTERIOR STYLING FOR
TOWN AND COUNTRY LIVING

WELCOME TO CAMPDEN

The town and country seats of the 1st Viscount Campden, both named Campden House, provide inspiration for our eclectic collection of silks, wools, embroideries, prints and weaves.

Teaming the cool and warm neutrals of the town with the lively blues, greens and pinks of the country, a blend of geometric and naturalistic styles provide endless possibilities for wall coverings, upholstery and soft furnishings. From sophisticated silks and wools for elegant town drawing rooms to vivacious embroideries and Suzani stripes for country kitchens and snugs, the Campden Collection combines heritage with inspiration. To add the perfect finishing touch, we have created a smart set of trims, along with playful drops and fringes.

From town elegance to country colour, the Campden Collection weaves two luxurious worlds into one.





Right Blinds: Chelsea, Petal. Trim: Burford Braid, Lupine.



Left Chair: Kiftsgate, Pink/Green. Piping: Beauchamp Velvet, Fir.





Right Curtains: Hidcote, Natural/Gold. Sofa: Bute, Natural. Cushions: Kiftgate, Gold; Beauchamp Velvet, Ochre; Hidcote, Natural/Gold backed in Beauchamp Velvet, Shrew. Footstool: Kiftgate, Gold.







Left Blinds: Kiftgate, Ink.





Right Curtain: Horizon, Mushroom. Sofa: Chelsea, Mineral. Trim: Burford Braid, Mineral.
 Cushions from back: Strata, Sandstone. Chelsea, Ivory. Trim: Burford Braid, Mineral.
 Footstool: Leopard, Ivory. Trim: Burford Braid, Mineral. Cushion: Leopard, Savannah. Lampshade: Regal Silk, Oyster.



CAMPDEN AT A GLANCE

FABRICS

SUZANI STRIPE



PINK/GREEN
31667/01



INK/GOLD
31667/02

HIDCOTE



PINK/GREEN
31669/01



NATURAL/GOLD
31669/02

ASHBEE



NATURAL
31666/01



TERRACOTTA
31666/02

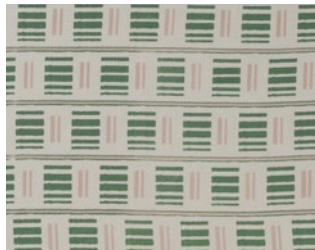


GREEN
31666/03



INK
31666/04

KIFTSGATE



PINK/GREEN
31668/01



NATURAL
31668/02

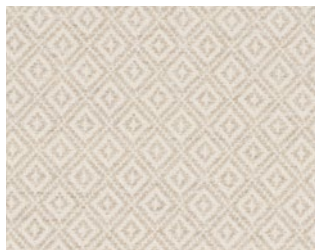


GOLD
31668/03

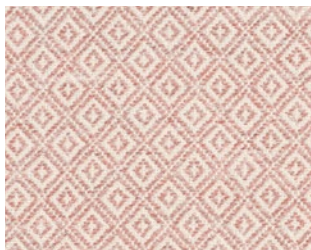


INK
31668/04

BUTE

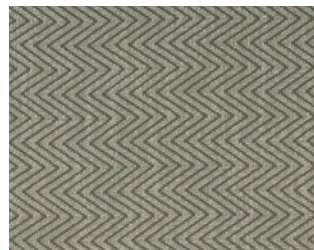


NATURAL
8334/01

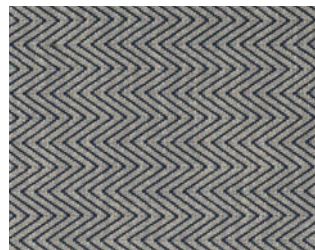


PINK
8334/03

HICKS



OLD GREEN
8335/01

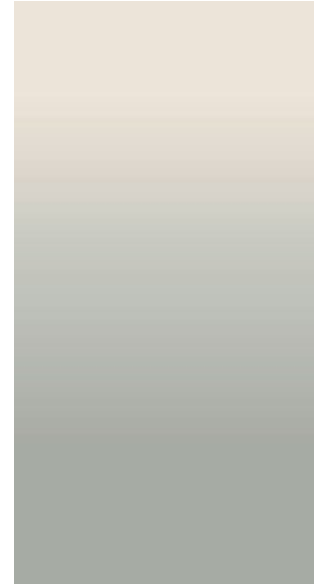


MIDNIGHT NAVY
8335/02

HORIZON - OMBRÉ CONNAUGHT SILK PANEL



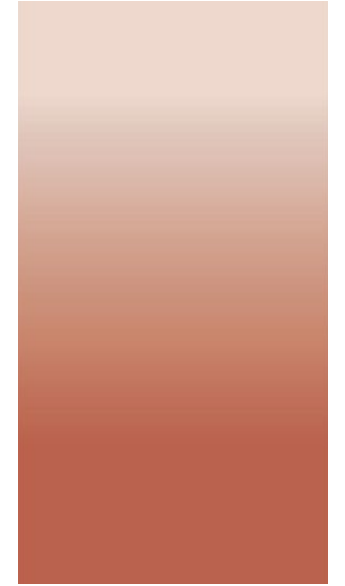
MUSHROOM
31662/01



CHATEAU GREY
31662/04



SLATE BLUE
31662/03



PINK
31662/02

TRIMS AND BRAIDS

BIBURY DROPS



IVORY
9005/01



NATURAL
9005/02



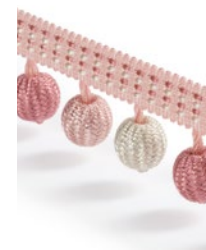
BLUE
9005/03



GREEN
9005/04



TERRACOTTA
9005/05



PINK
9005/06

BURFORD BRAID



MINERAL
9006/01



LUPINE
9006/02



INK
9006/03

ABOUT JAMES HARE

Since James Hare's humble beginnings in 1865, the Hare family has been designing, manufacturing and distributing elegant fabrics using only the finest materials and techniques.

An extensive range of plains in everything from pure and faux silk to linen is available in over 700 colours, along with a gorgeous array of embroideries and jacquards. Virtually all the fabrics can be paper backed to create luxurious wallcoverings, bringing intense colour and texture to an interior.

Now run by the fifth generation of the family, the company still abides by its founder's principles of offering only the best in British design, quality and service.

www.james-hare.com

With special thanks to:

Bella Figura www.bella-figura.com **Chelsea Textiles** www.chelseatextiles.com
David Seyfried www.davidseyfried.com **Dormy House** www.thedormyhouse.com
Fiona McDonald www.fionamcdonald.com **Riviere Rugs** www.riviererugs.com
Tate & Darby www.tateanddarby.com **The Headboard Workshop**
www.theheadboardworkshop.co.uk **Vaughan** www.vaughandesigns.com



