



JAMES HARE

SINCE 1865

Gardyne

WELCOME TO GARDYNE

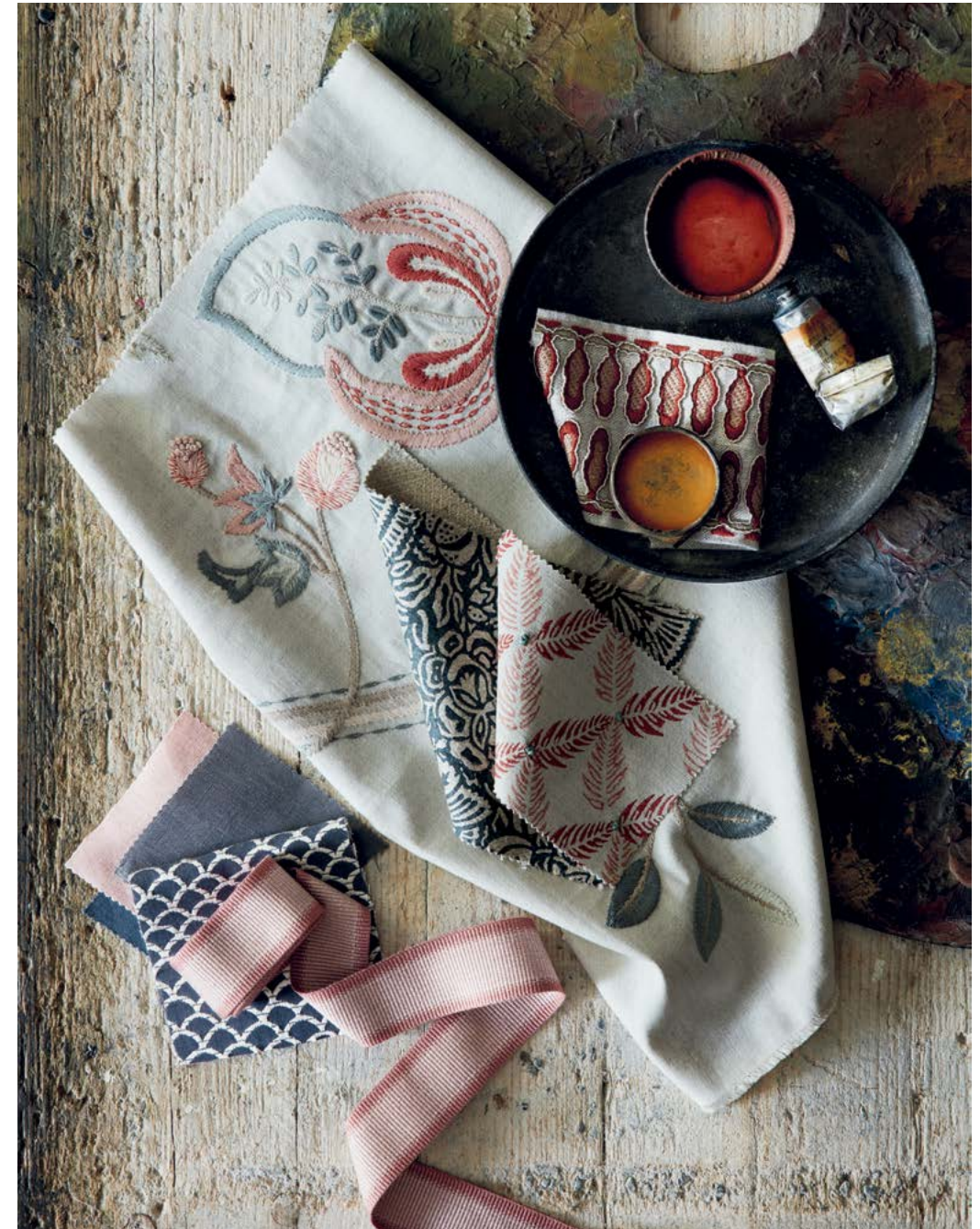
Named after the old English word for garden, Gardyne encapsulates the charm and character of a Tudor English garden, bringing warmth and personality to an interior.

This enchanting, matt collection boasts a combination of embroidered, printed and jacquard fabrics. Statement designs are perfected with intricate and sophisticated stitching that emulates hand needlework, including the French knot technique. Shades of blue, green and terracotta are complemented by tasteful neutrals to ensure that this collection will flow seamlessly, while a choice of simple or dramatic trims enable you to create a refined finishing touch.

Lismore, a plain linen, is introduced in a selection of calming colours and has been designed to perfectly coordinate with the decorative range.

Allow Gardyne to bring a delightful, cosy and unique style to your home.





Left Wall Hangings: Elizabeth, Red/Blue. Cushions (l-r): Lismore Linen, Plaster. Trim: Brush Fringe, Feather. Elizabeth, Red/Blue. Gardyne, Ink. Elizabeth, as before. Lismore Linen, as before. Bench upholstery: Lismore Linen, Natural.





Right Curtains: Gardyne, Sage Green. Cushions (l-r): Lismore Linen, Plaster. Trim: Lismore Linen, Estate Blue. Elizabeth, Terracotta. Sofa, Lampshade: Beauchamp Velvet, Fontainebleau.







Left Cushions (l-r): Lismore Linen, Chive. Trim: Ribbon Trim, Green. Lismore Linen, Morandi Grey and Estate Blue. Trim: Tudor Braid, Grey. Lismore Linen, Morandi Grey. Trim: Ribbon Trim, Antoinette. Beauchamp Velvet, Shrew. Trim: Ribbon Trim, Feather. Lismore Linen, Ink. Trim: Tudor Braid, Ink.





Right Headboard, Curtain: Knot Garden, Grey. Cushions (l-r): Lismore Linen, Morandi Grey. Trim: Ribbon Trim, Antoinette. Gardyne, Grey. Lismore Linen, Sage Green and Morandi Grey. Trim: Tudor Braid, Grey. Wallcovering: Vyne Silk, Galway.



Left Curtains: Meander, Natural. Sofa: Gardyne, Grey. Sofa Seat: Beauchamp Velvet, Shrew. Cushions (l-r): Lismore Linen, Plaster. Trim: Brushed Fringe, Feather. Gardyne, Grey. Gardyne, as before. Lismore Linen, as before. Footstool: Beauchamp Velvet, Shrew.



Right Meander, Ivory.





Left Curtains: Lismore Linen, Lovat Blue (top). Lismore Linen, Glacier (bottom). Trim: Ribbon Trim, Antoinette. Sheer: Lismore Sheer, Ivory. Cushions (l-r): Lismore Linen, Morandi Grey. Trim: Ribbon Trim, Antoinette. Lismore Linen, Chive. Trim: Ribbon Trim, Green.

GARDYNE AT A GLANCE

FABRICS

ELIZABETH



TERRACOTTA
31654/01



RED/BLUE
31654/02

MEANDER



IVORY
31656/01



NATURAL
31656/02

KNOT GARDEN



GREY
31659/01



RED
31659/02



GREEN
31659/03

GARDYNE



NATURAL
31657/01



TERRACOTTA
31657/02



GREY
31657/03



INK
31657/04

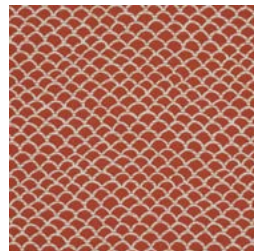


SAGE GREEN
31657/05

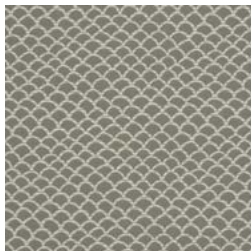
ARBOUR



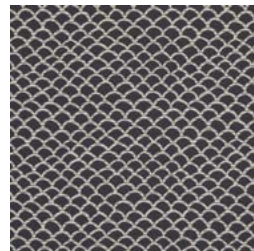
MINERAL
31655/01



TERRACOTTA
31655/02



SAGE GREEN
31655/03



INK
31655/04

TRIMS AND BRAIDS

TUDOR BRAID



GREY
9003/01



TERRACOTTA
9003/02



GREEN
9003/03



INK
9003/04

RIBBON TRIM



FEATHER
9004/01



ALMOND
9004/02



PINK
9004/03



GREEN
9004/04



ANTOINETTE
9004/05

ABOUT JAMES HARE

Since James Hare's humble beginnings in 1865, the Hare family has been designing, manufacturing and distributing elegant fabrics using only the finest materials and techniques.

An extensive range of plains in everything from pure and faux silk to linen and velvet is available in over 700 colours, along with a gorgeous array of embroideries and jacquards. We are now proud to offer a range of fire-retardant fabrics, introducing the James Hare style to commercial spaces. Virtually all of our fabrics can be paper backed to create luxurious wallcoverings, bringing intense colour and texture to a room.

Now run by the fifth generation of the family, the company still abides by its founder's principles of offering only the best in British design, quality and service.



WITH SPECIAL THANKS TO:

BELLA FIGURA
BELLAFIGURA.COM

DAVID SEYFRIED
DAVIDSEYFRIED.COM

FARROW AND BALL
FARROW-BALL.COM

JIM LAWRENCE
JIM-LAWRENCE.CO.UK

MAISON ARTEFACT
MAISONARTEFACT.COM

RIVIERE RUGS
RIVIERERUGS.COM

THE DORMY HOUSE
THEDORMYHOUSE.COM

THE ODD CHAIR COMPANY
THEODDCHAIRCOMPANY.COM

WAVENEY RUSH
WAVENEYRUSH.CO.UK



JH

James Hare Limited Monarch House 7 Queen Street Leeds LS1 2TN UK
Telephone +44 (0)113 243 1204 sales@james-hare.com www.james-hare.com